

Notes
 1. All dimensions, chainages, levels and co-ordinates are in metres unless stated otherwise.
 2. These Land Plans should be read in conjunction with other plans and documents in the application for development consent, in particular the Book of Reference, Statement of Reasons, Development Consent Order, and the Land and Right Negotiation Tracker.
 Regulation 5(2)(i) and 5(2)(m) - Infrastructure Planning (Applications: Prescribed Forms and Procedure) Regulations 2009

KEY
 □ Sheet extent and number
 — Order limits

© Crown copyright and database rights 2025 Ordnance Survey AC0000808122. You are permitted to use this data solely to enable you to respond to, or interact with, the organisation that provided you with the data. You are not permitted to copy, sub-licence, distribute or sell any of this data to third parties in any form.

Information produced by HM Land Registry. Crown copyright and database rights 2024. The polygons (including the associated geometry, namely x, y co-ordinates) are subject to Crown copyright and database rights 2024 and are reproduced with the permission of Ordnance Survey.

World Hillshade: Sources: Esri, Vantor, Airbus DS, USGS, NGA, NASA, CGIAR, N Robinson, NCEAS, NLS, OS, NMA, Geodatastyrelsen, Rijkswaterstaat, GSA, Geoland, FEMA, Intermap, and the GIS user community
 World Topographic Map: Sources: Esri, TomTom, Garmin, FAO, NOAA, USGS, © OpenStreetMap contributors, and the GIS User Community



Client
FRODSHAM SOLAR LIMITED



Project
FRODSHAM SOLAR

Drawing Title
LAND AND CROWN LAND PLANS
KEY PLAN

Status	UPDATED PLANS	Revision	P04
		Date	05/03/2026

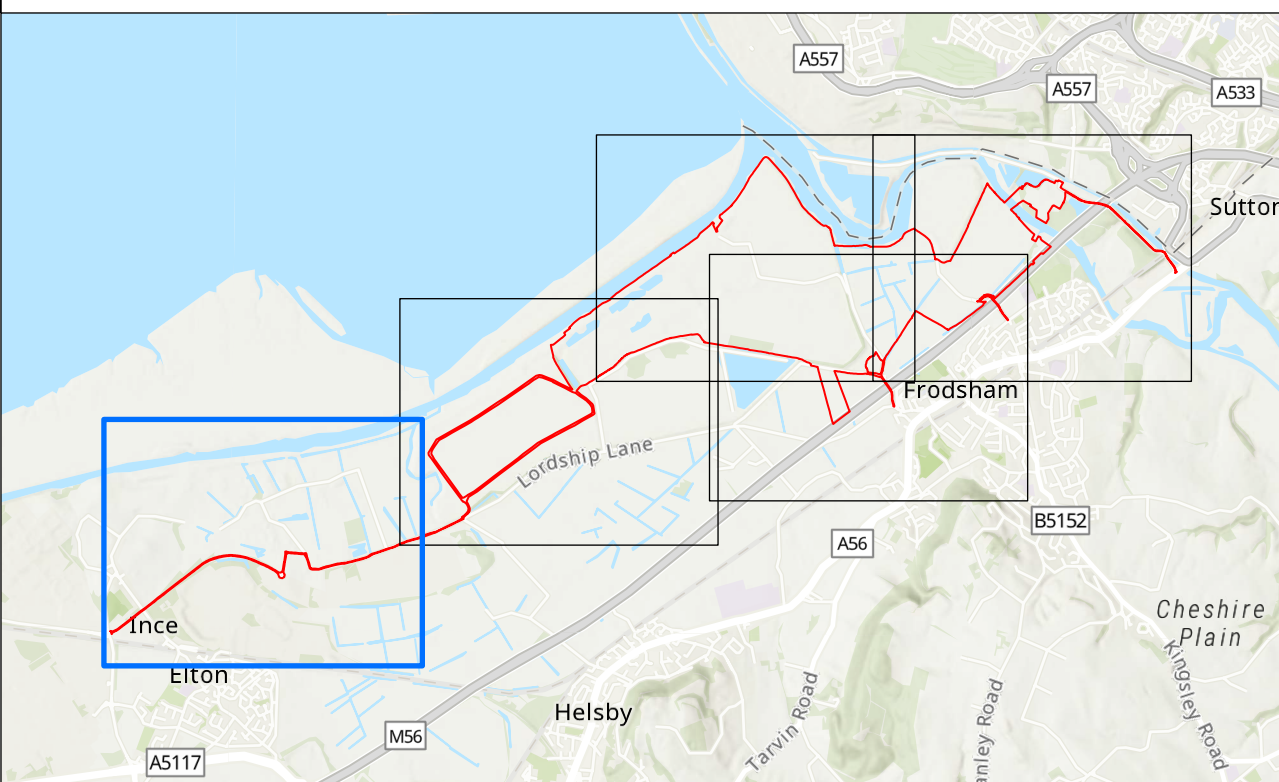
Scale: 1:10,000 @ A0 Spatial Reference System British National Grid

Drawn By	Checked By	Approved By

Drawing reference
081_ARDG_FSF_LP_CL

This document is not to be used in whole or in part other than for the intended purpose and project for which it was prepared and provided.

KEY PLAN



Notes

- 1. All dimensions, chainages, levels and co-ordinates are in metres unless stated otherwise.
 - 2. These Land Plans should be read in conjunction with other plans and documents in the application for development consent, in particular the Book of Reference, Statement of Reasons, Development Consent Order, and the Land and Right Negotiation Tracker.
- Regulation 5(2)(i) and 5(2)(m) - Infrastructure Planning (Applications: Prescribed Forms and Procedure) Regulations 2009

KEY

- Order limits
- Order land – new rights to be compulsorily acquired and in relation to which it is proposed to
- extinguish easements, servitudes and other
- private rights the exercise of which is inconsistent with the rights and restrictions acquired pursuant to the Order are to be extinguished

© Crown copyright and database rights 2025 Ordnance Survey AC0000808122. You are permitted to use this data solely to enable you to respond to, or interact with, the organisation that provided you with the data. You are not permitted to copy, sub-licence, distribute or sell any of this data to third parties in any form.

Information produced by HM Land Registry. Crown copyright and database rights 2024. The polygons (including the associated geometry, namely x, y co-ordinates) are subject to Crown copyright and database rights 2024 and are reproduced with the permission of Ordnance Survey.

World Hillshade: Sources: Esri, Vantor, Airbus DS, USGS, NGA, NASA, CGIAR, N Robinson, NCEAS, NLS, OS, NMA, Geodatasysteisen, Rijkswaterstaat, GSA, Geoland, FEMA, Intermap, and the GIS user community
 World Topographic Map: Sources: Esri, TomTom, Garmin, FAO, NOAA, USGS, © OpenStreetMap contributors, and the GIS User Community



Client
FRODSHAM SOLAR LIMITED



Project
FRODSHAM SOLAR

Drawing Title
LAND AND CROWN LAND PLANS
SHEET 1 OF 5

Status
UPDATED PLANS Revision **P04**
 Date **05/03/2026**

Scale: 1:2,500 @ A0 Spatial Reference System **British National Grid**

0 50 100 150 200 250 300 Metres

Drawn By Checked By Approved By

Drawing reference
081_ARDG_FSF_LP_CL

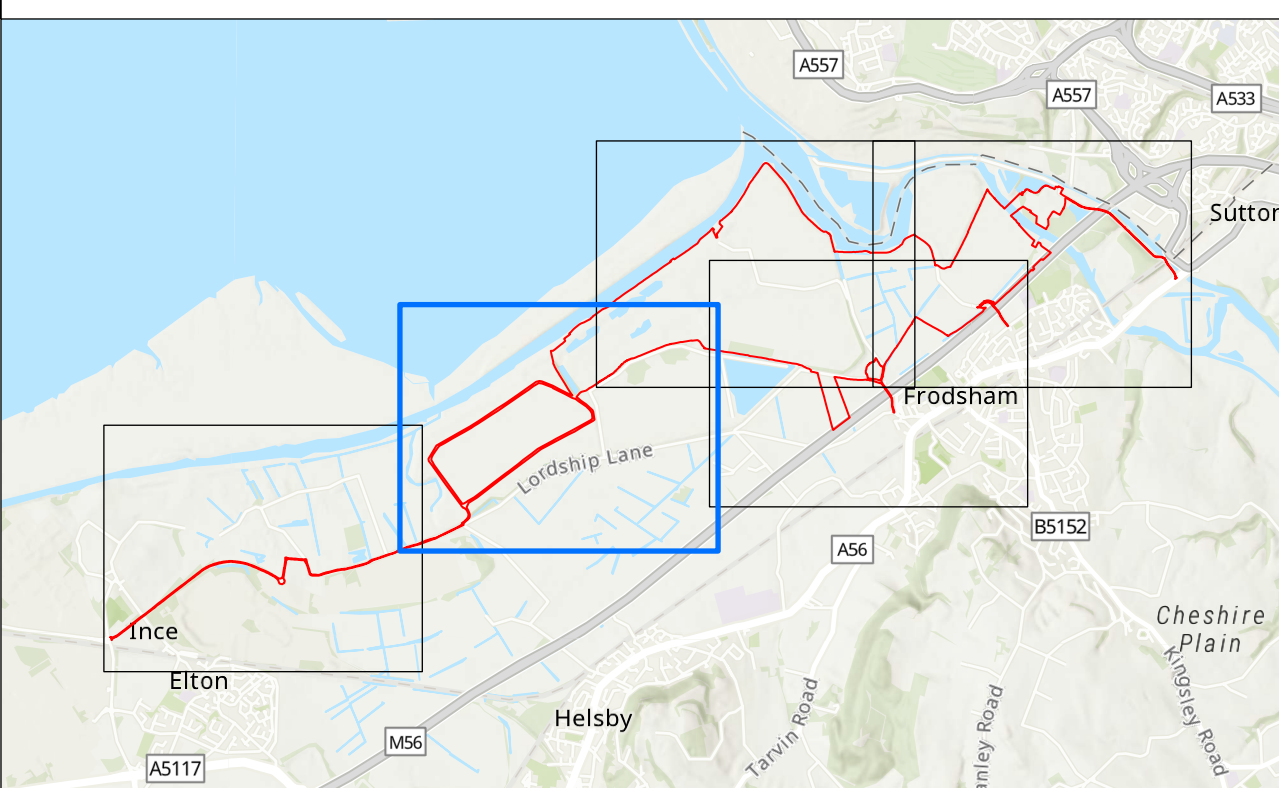
This document is not to be used in whole or in part other than for the intended purpose and project for which it was prepared and provided.



For Continuation see Sheet 2

ORDNANCE SURVEY

KEY PLAN



Notes

1. All dimensions, chainages, levels and co-ordinates are in metres unless stated otherwise.
 2. These Land Plans should be read in conjunction with other plans and documents in the application for development consent, in particular the Book of Reference, Statement of Reasons, Development Consent Order, and the Land and Right Negotiation Tracker.
- Regulation 5(2)(i) and 5(2)(m) - Infrastructure Planning (Applications: Prescribed Forms and Procedure) Regulations 2009

KEY

- Order limits
- Order land – new rights to be compulsorily acquired and in relation to which it is proposed to extinguish easements, servitudes and other private rights the exercise of which is inconsistent with the rights and restrictions acquired pursuant to the Order are to be extinguished
- Order land – freehold and leasehold to be compulsorily acquired and in relation to which it is proposed to extinguish easements, servitudes and other private rights

© Crown copyright and database rights 2025 Ordnance Survey AC0000808122. You are permitted to use this data solely to enable you to respond to, or interact with, the organisation that provided you with the data. You are not permitted to copy, sub-licence, distribute or sell any of this data to third parties in any form.

Information produced by HM Land Registry. Crown copyright and database rights 2024. The polygons (including the associated geometry, namely x, y co-ordinates) are subject to Crown copyright and database rights 2024 and are reproduced with the permission of Ordnance Survey.

World Hillshade: Sources: Esri, Vantor, Airbus DS, USGS, NGA, NASA, CGIAR, N Robinson, NCEAS, NLS, OS, NMA, Geodatasystrelen, Rijkswaterstaat, GSA, Geoland, FEMA, Intermap, and the GIS user community
 World Topographic Map: Sources: Esri, TomTom, Garmin, FAO, NOAA, USGS, © OpenStreetMap contributors, and the GIS User Community



Client
FRODSHAM SOLAR LIMITED



Project
FRODSHAM SOLAR

Drawing Title
LAND AND CROWN LAND PLANS
SHEET 2 OF 5

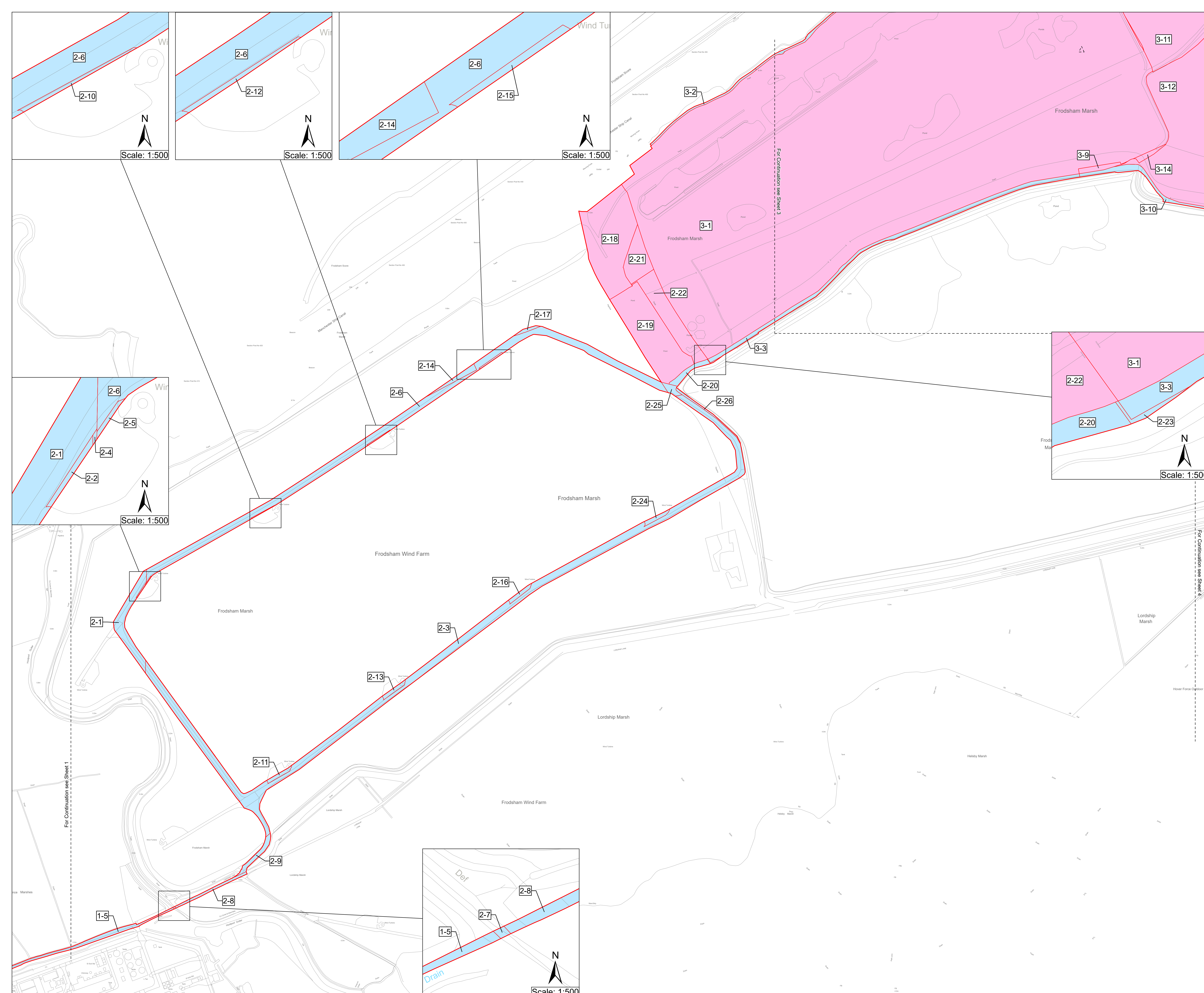
Status	UPDATED PLANS	Revision	P04
		Date	05/03/2026

Scale: 1:2,500 @ A0 Spatial Reference System British National Grid

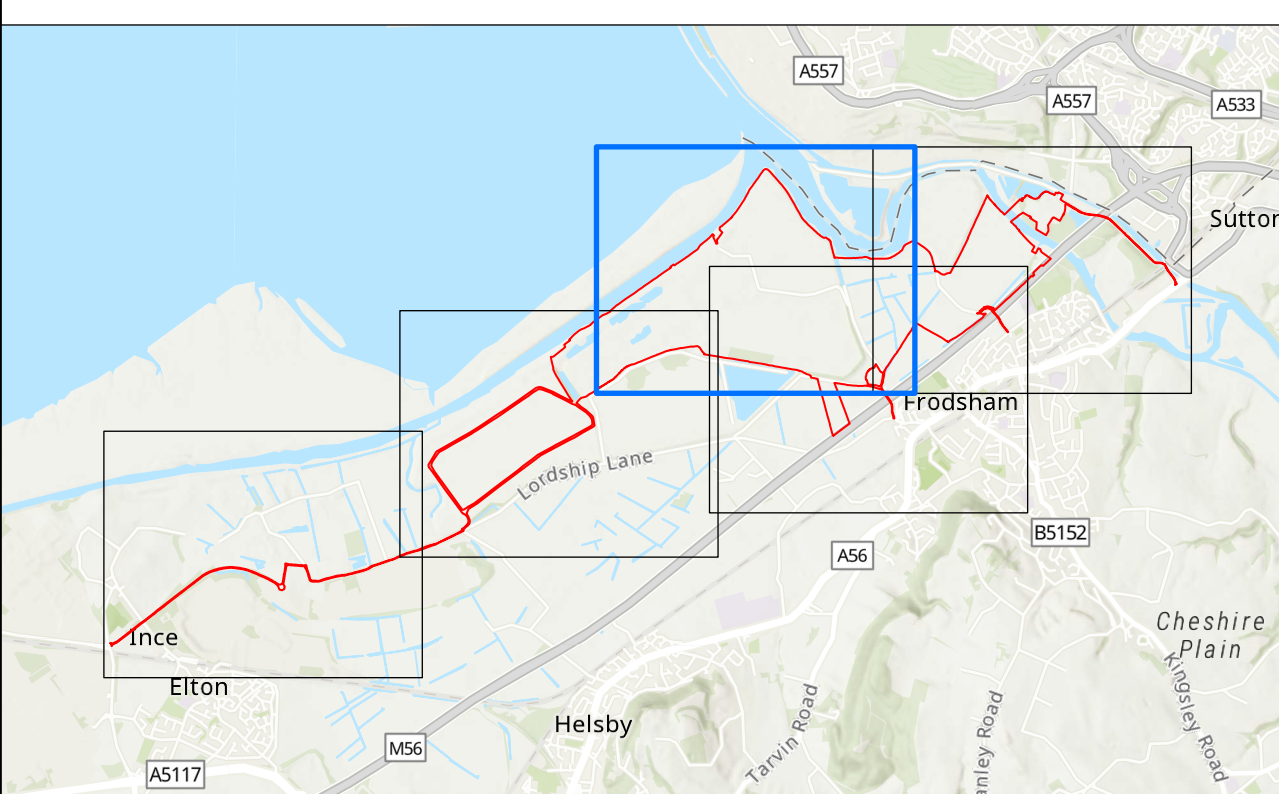
0	50	100	150	200	250	300
Metres						
Drawn By	Checked By	Approved By				

Drawing reference
081_ARDG_FSF_LP_CL

This document is not to be used in whole or in part other than for the intended purpose and project for which it was prepared and provided.



KEY PLAN



Notes
 1. All dimensions, chainages, levels and co-ordinates are in metres unless stated otherwise.

2. These Land Plans should be read in conjunction with other plans and documents in the application for development consent, in particular the Book of Reference, Statement of Reasons, Development Consent Order, and the Land and Right Negotiation Tracker.

Regulation 5(2)(i) and 5(2)(m) - Infrastructure Planning (Applications: Prescribed Forms and Procedure) Regulations 2009

KEY

- Order limits
- Order land – new rights to be compulsorily acquired and in relation to which it is proposed to extinguish easements, servitudes and other private rights the exercise of which is inconsistent with the rights and restrictions acquired pursuant to the Order are to be extinguished
- Order land – freehold and leasehold to be compulsorily acquired and in relation to which it is proposed to extinguish easements, servitudes and other private rights
- No Order land powers sought

© Crown copyright and database rights 2025 Ordnance Survey AC0000808122. You are permitted to use this data solely to enable you to respond to, or interact with, the organisation that provided you with the data. You are not permitted to copy, sub-licence, distribute or sell any of this data to third parties in any form.

Information produced by HM Land Registry. Crown copyright and database rights 2024. The polygons (including the associated geometry, namely x, y co-ordinates) are subject to Crown copyright and database rights 2024 and are reproduced with the permission of Ordnance Survey.

World Hillshade: Sources: Esri, Vantor, Airbus DS, USGS, NGA, NASA, CGIAR, N Robinson, NCEAS, NLS, OS, NMA, Geodatasystelsen, Rijkswaterstaat, GSA, Geoland, FEMA, Intermap, and the GIS user community

World Topographic Map: Sources: Esri, TomTom, Garmin, FAO, NOAA, USGS, © OpenStreetMap contributors, and the GIS User Community



Client
FRODSHAM SOLAR LIMITED

Designer
Ardent

Project
FRODSHAM SOLAR

Drawing Title
LAND AND CROWN LAND PLANS
SHEET 3 OF 5

Status
UPDATED PLANS

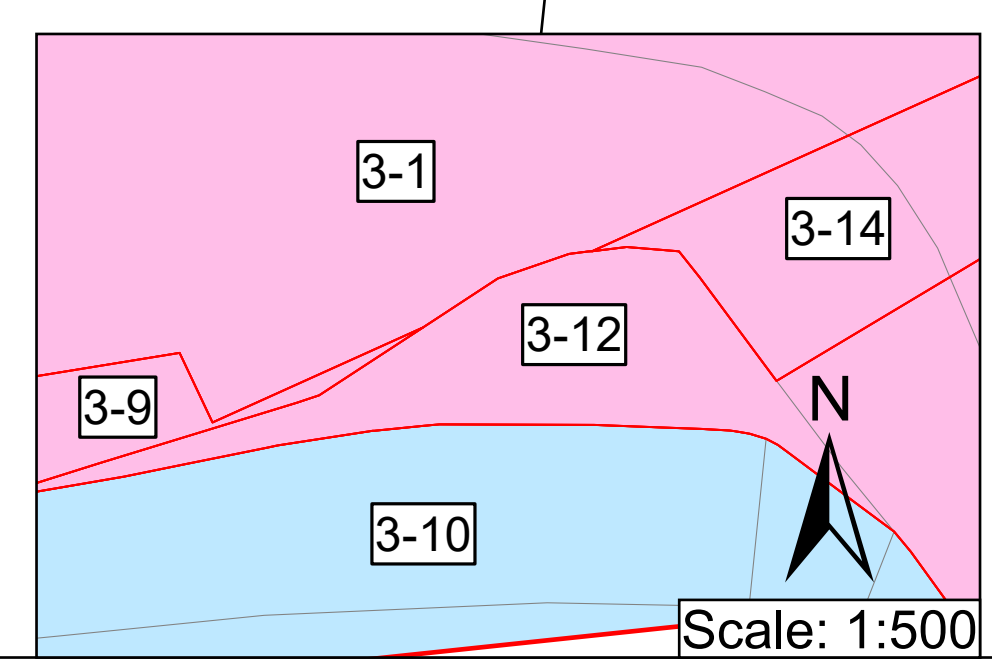
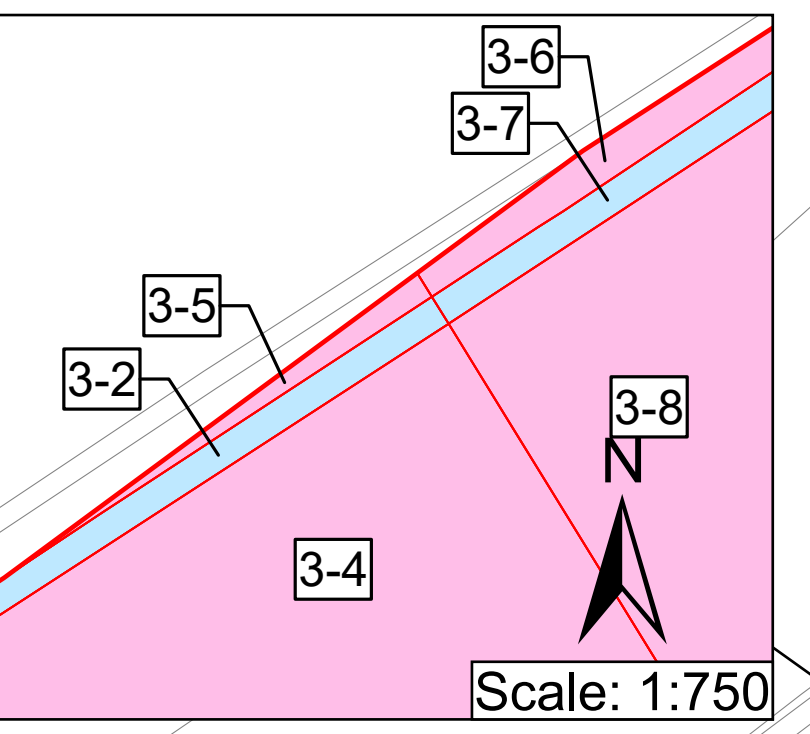
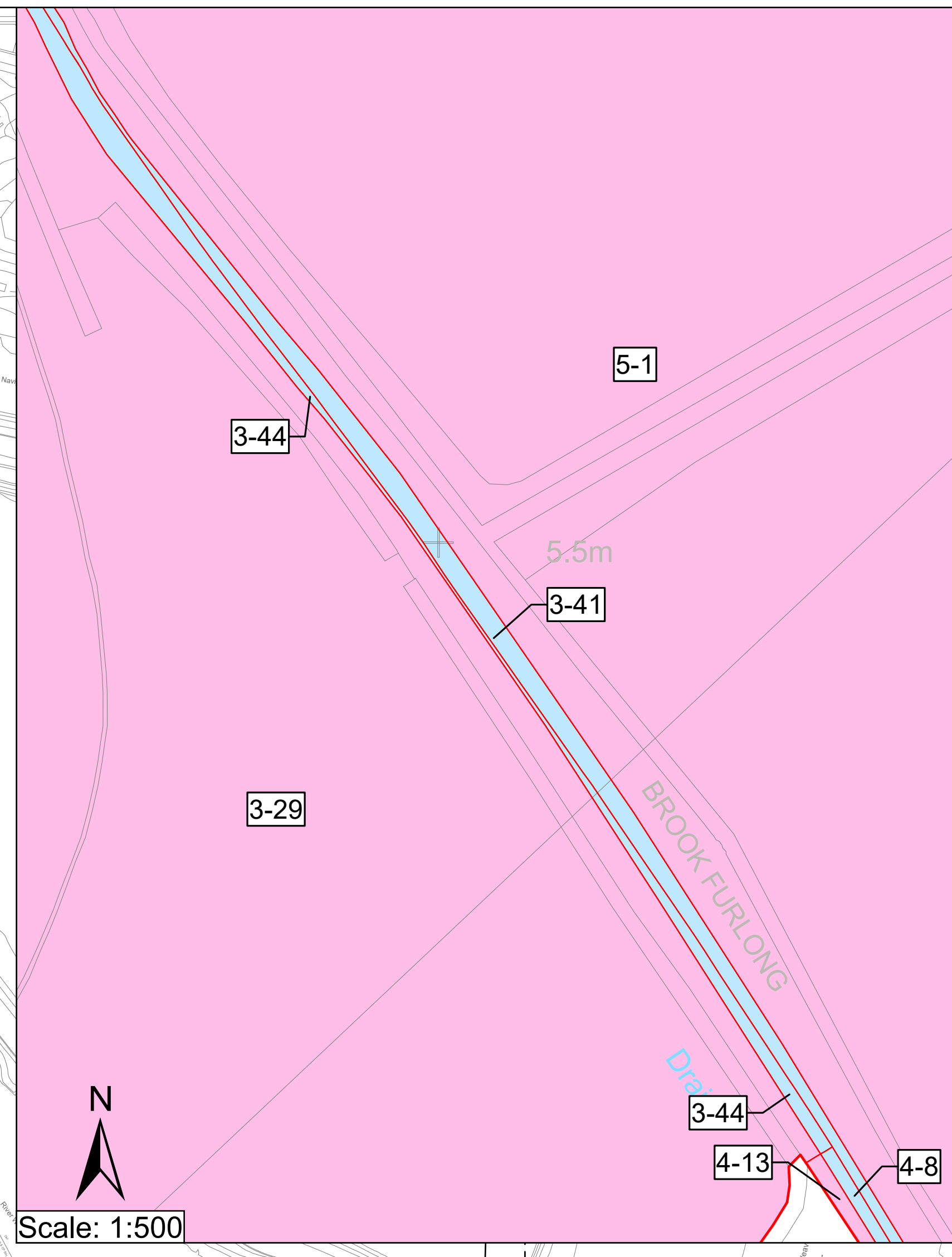
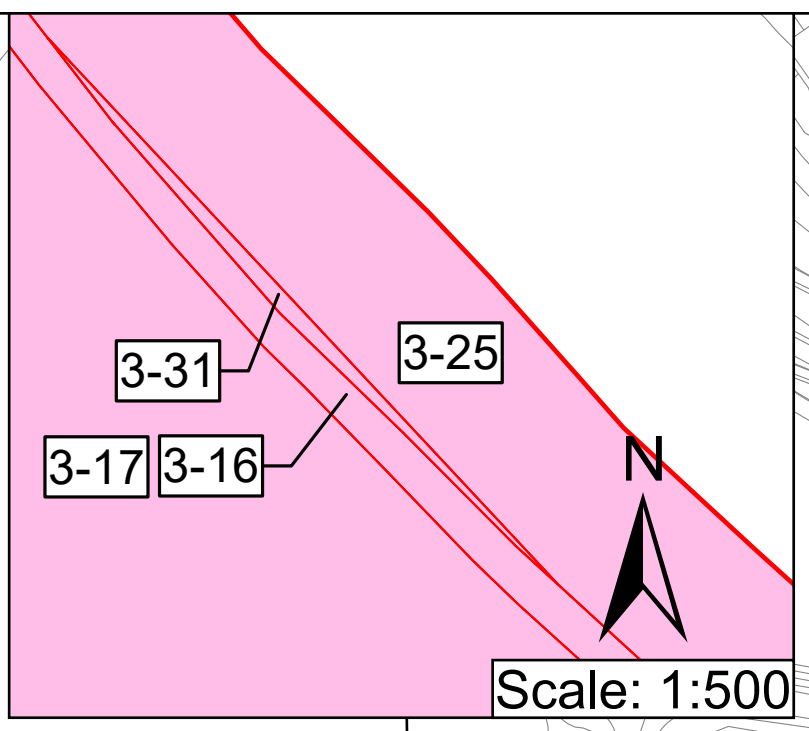
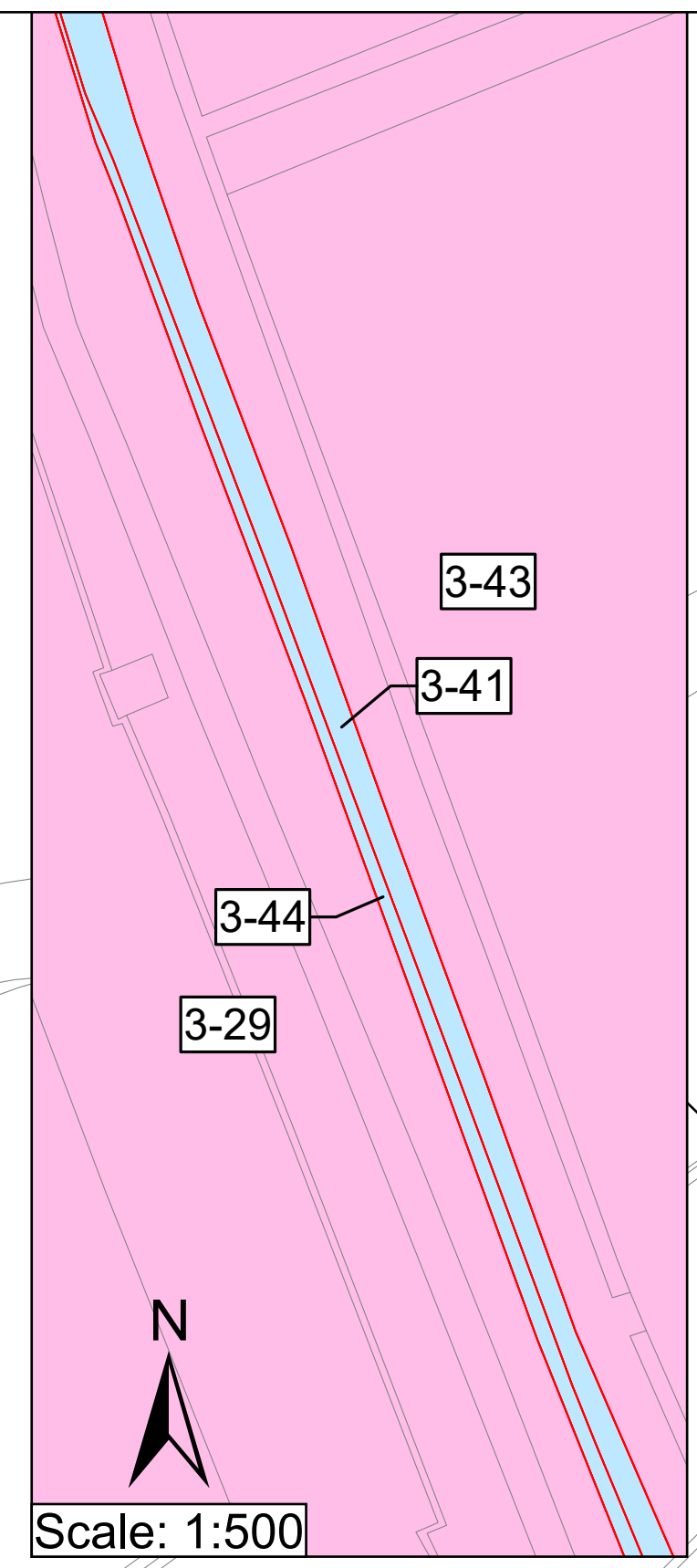
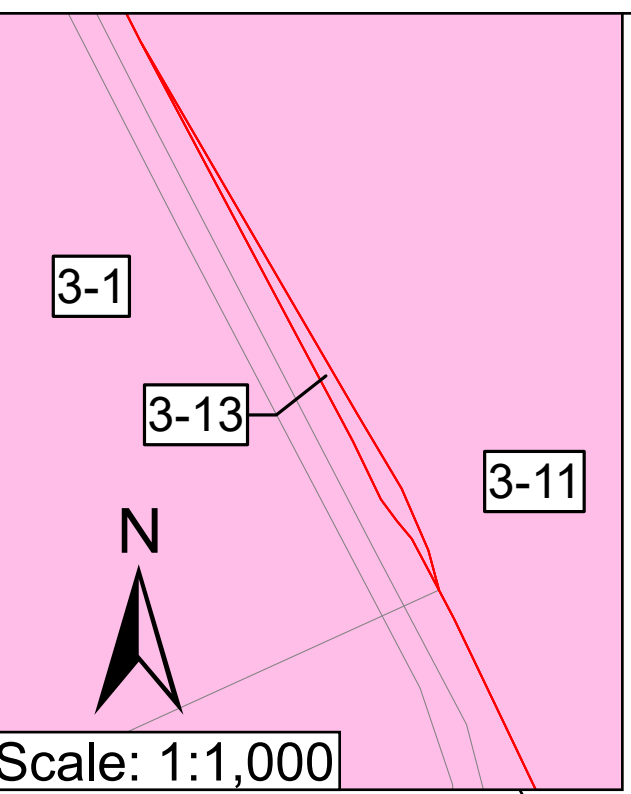
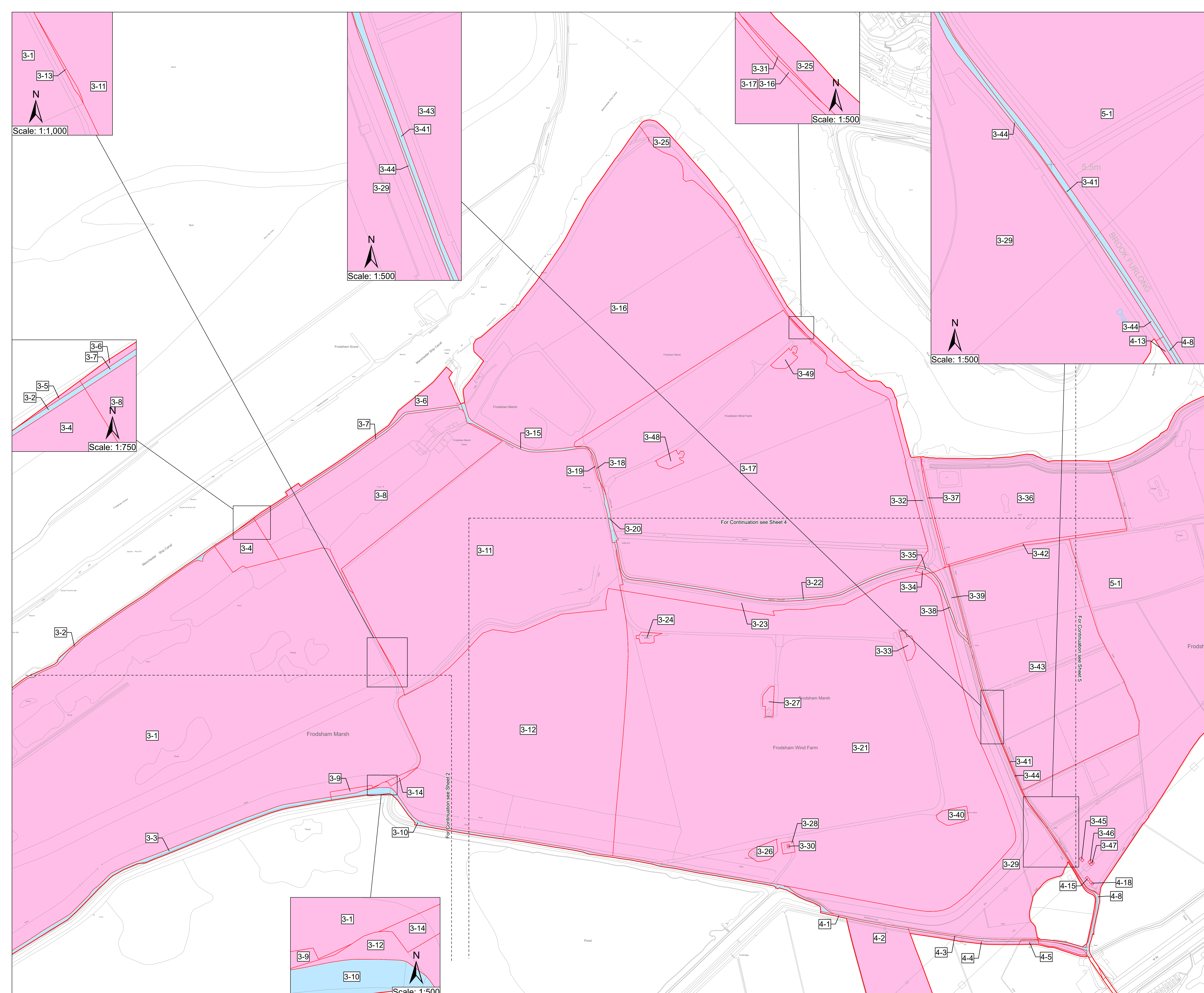
Revision **P04**
 Date **05/03/2026**

Scale: 1:2,500 @ A0 Spatial Reference System British National Grid

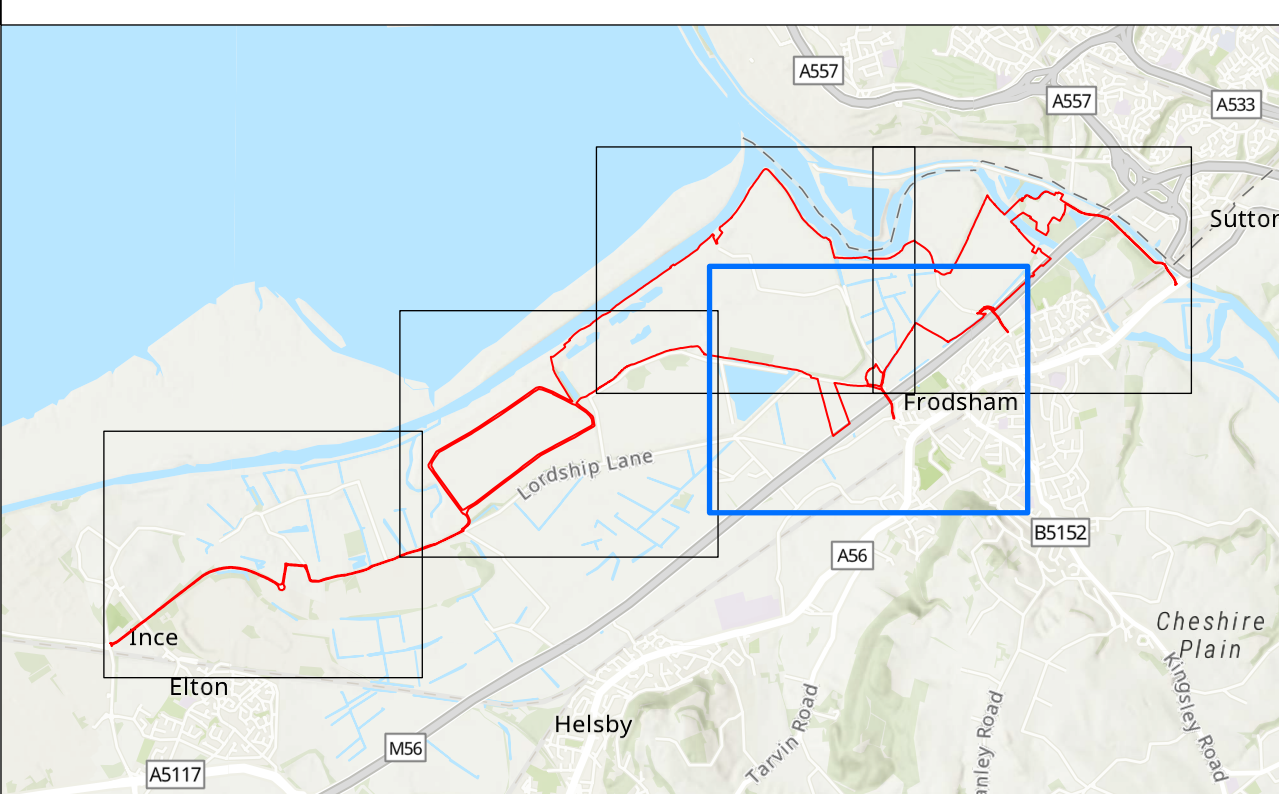
0	50	100	150	200	250	300
Metres						
Drawn By	Checked By	Approved By				

Drawing reference
081_ARDG_FSF_LP_CL

This document is not to be used in whole or in part other than for the intended purpose and project for which it was prepared and provided.



KEY PLAN



Notes
 1. All dimensions, chainages, levels and co-ordinates are in metres unless stated otherwise.
 2. These Land Plans should be read in conjunction with other plans and documents in the application for development consent, in particular the Book of Reference, Statement of Reasons, Development Consent Order, and the Land and Right Negotiation Tracker.
 Regulation 5(2)(i) and 5(2)(m) - Infrastructure Planning (Applications: Prescribed Forms and Procedure) Regulations 2009

KEY

- Order limits
- Order land – new rights to be compulsorily acquired and in relation to which it is proposed to extinguish easements, servitudes and other private rights the exercise of which is inconsistent with the rights and restrictions acquired pursuant to the Order are to be extinguished
- Order land – freehold and leasehold to be compulsorily acquired and in relation to which it is proposed to extinguish easements, servitudes and other private rights
- No Order land powers sought

© Crown copyright and database rights 2025 Ordnance Survey AC000808122. You are permitted to use this data solely to enable you to respond to, or interact with, the organisation that provided you with the data. You are not permitted to copy, sub-licence, distribute or sell any of this data to third parties in any form.

Information produced by HM Land Registry. Crown copyright and database rights 2024. The polygons (including the associated geometry, namely x, y co-ordinates) are subject to Crown copyright and database rights 2024 and are reproduced with the permission of Ordnance Survey.

World Hillshade: Sources: Esri, Vantor, Airbus DS, USGS, NGA, NASA, CGIAR, N Robinson, NCEAS, NLS, OS, NMA, Geodatastyrelsen, Rijkswaterstaat, GSA, Geoland, FEMA, Intermap, and the GIS user community
 World Topographic Map: Sources: Esri, TomTom, Garmin, FAO, NOAA, USGS, © OpenStreetMap contributors, and the GIS User Community



Client
FRODSHAM SOLAR LIMITED



Project
FRODSHAM SOLAR

Drawing Title
LAND AND CROWN LAND PLANS
SHEET 4 OF 5

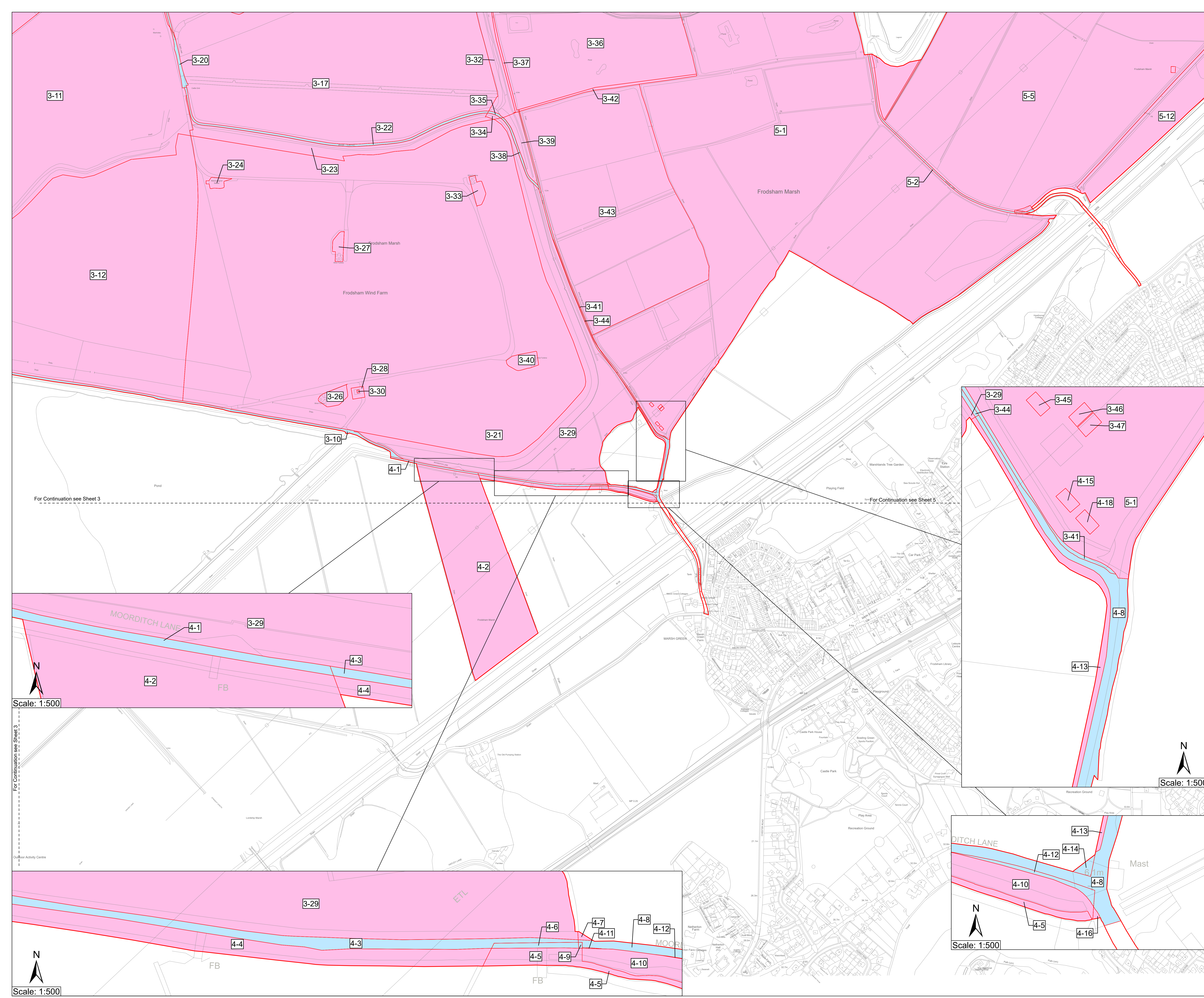
Status
UPDATED PLANS

Revision **P04**
 Date **05/03/2026**

Scale: 1:2,500 @ A0 Spatial Reference System British National Grid

Drawing reference
081_ARDG_FSF_LP_CL

This document is not to be used in whole or in part other than for the intended purpose and project for which it was prepared and provided.



For Continuation see Sheet 3

For Continuation see Sheet 5

Scale: 1:500

Scale: 1:500

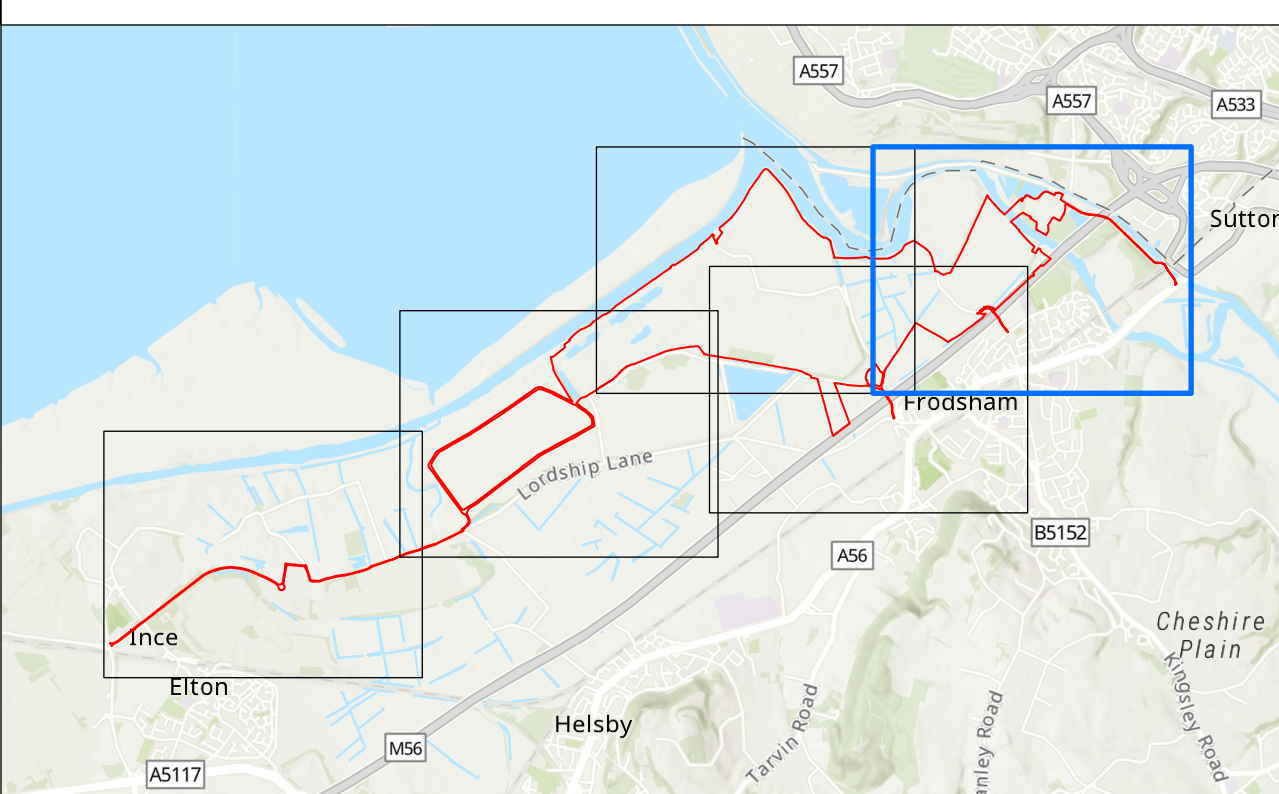
Scale: 1:500

Scale: 1:500

For Continuation see Sheet 3

Outdoor Activity Centre

KEY PLAN



Notes
 1. All dimensions, chainages, levels and co-ordinates are in metres unless stated otherwise.
 2. These Land Plans should be read in conjunction with other plans and documents in the application for development consent, in particular the Book of Reference, Statement of Reasons, Development Consent Order, and the Land and Right Negotiation Tracker.
 Regulation 5(2)(i) and 5(2)(m) - Infrastructure Planning (Applications: Prescribed Forms and Procedure) Regulations 2009

KEY

- Order Limits
- Crown Land
- Order land – new rights to be compulsorily acquired and in relation to which it is proposed to extinguish easements, servitudes and other private rights the exercise of which is inconsistent with the rights and restrictions acquired pursuant to the Order are to be extinguished
- Order land – freehold and leasehold to be compulsorily acquired and in relation to which it is proposed to extinguish easements, servitudes and other private rights
- No Order land powers sought

© Crown copyright and database rights 2025 Ordnance Survey AC000808122. You are permitted to use this data solely to enable you to respond to, or interact with, the organisation that provided you with the data. You are not permitted to copy, sub-licence, distribute or sell any of this data to third parties in any form.

Information produced by HM Land Registry. Crown copyright and database rights 2024. The polygons (including the associated geometry, namely x, y co-ordinates) are subject to Crown copyright and database rights 2024 and are reproduced with the permission of Ordnance Survey.

World Hillshade: Sources: Esri, Vantor, Airbus DS, USGS, NGA, NASA, CGIAR, N Robinson, NCEAS, NLS, OS, NMA, Geodatasystemen, Rijkswaterstaat, GSA, Geoland, FEMA, Intermap, and the GIS user community
 World Topographic Map: Sources: Esri, TomTom, Garmin, FAO, NOAA, USGS, © OpenStreetMap contributors, and the GIS User Community



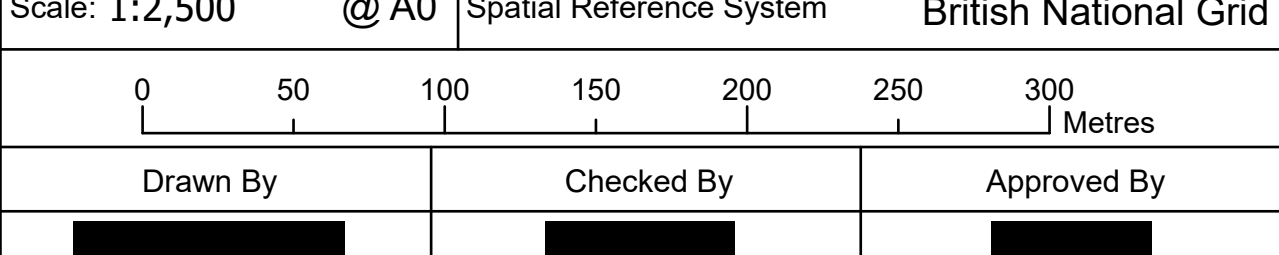
Client
FRODSHAM SOLAR LIMITED



Project
FRODSHAM SOLAR

Drawing Title
**LAND AND CROWN LAND PLANS
 SHEET 5 OF 5**

Status	Revision
UPDATED PLANS	P04
Scale: 1:2,500 @ A0 Spatial Reference System	Date
British National Grid	05/03/2026



Drawing reference
081_ARDG_FSF_LP_CL

This document is not to be used in whole or in part other than for the intended purpose and project for which it was prepared and provided.

